

INVITATION TO THE CLOSING EVENT

HOW TO FOSTER SOCIAL INNOVATION IN RURAL AREAS

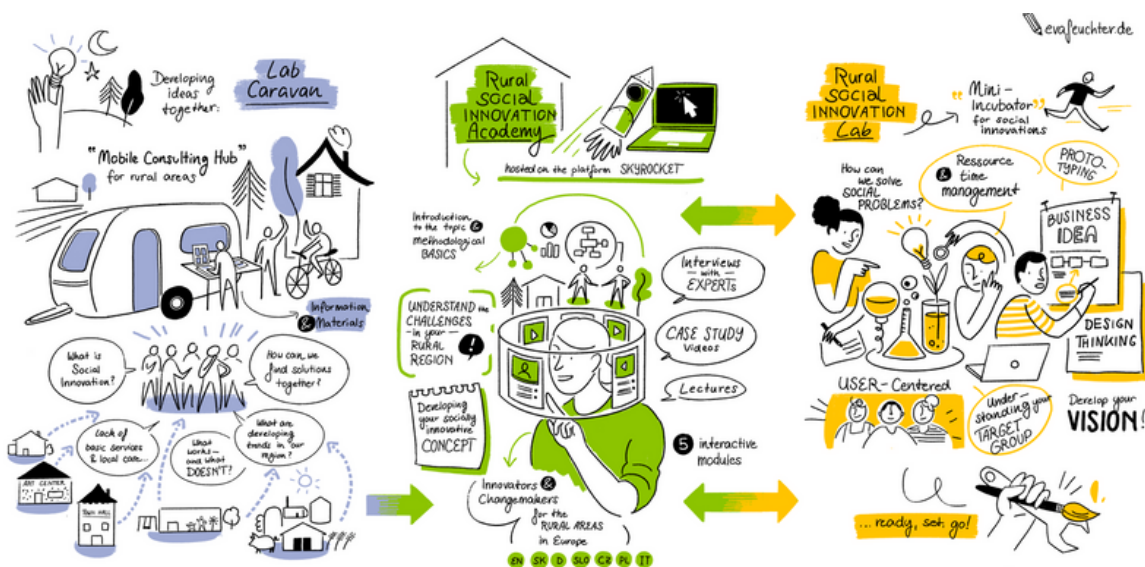


THURSDAY | 20 JANUARY 2022 | 10:00 - 11:30 A.M.

The aim of **CERUSI** (Central European Rural Social Innovation) is to strengthen social innovation and social entrepreneurship in rural areas throughout Central Europe.

CERUSI is organising its final online event on **20th of January 2022, 10:00-11:30 a.m.** via **Zoom**. The event will showcase the project's main outputs and findings and discuss policy opportunities to encourage social innovation in rural areas.

Furthermore, we launch the **CERUSI Partnership Network**, a network of actors who share a common vision to improve social innovation ecosystems in rural areas throughout Central Europe.



When? **20. 1. 2022, 10:00 - 11:30 a.m.**

Where? **Online**, please **register [HERE](#)**

After the registration you will receive a confirmation mail with the link and details for the webinar.

In its efforts of reaching out to rural change-makers in Central Europe the CERUSI Partnership set up a series of three webinars (online courses) dedicated to the topic of the "Borders of Rural Social Innovation". If you want to learn more about the project, you can visit our [website](#) and subscribe to our [newsletter](#) or check out the [RSI Academy](#).

RURAL SOCIAL INNOVATION

On **Thursday, 20. 1. 2022** our speakers will talk about:

- 10:00 **Introduction & words of welcome**
By Miro Welcker, Social Impact
- 10:05 **Short overview of the CERUSI project**
By Wolfgang Haider, ZSI-Zentrum für Soziale Innovation GmbH
- 10:15 **Transnational Rural Social Innovation Strategy**
Key objectives, Implications for practice
By Stefanie Konzett-Smoliner, ZSI-Zentrum für Soziale Innovation GmbH
- 10:30 **Virtual tour: The Skyrocket platform - a digital environment for rural social innovation**
Lessons learned: Goals, KPIs & Statistics
By Davide Fava, Democenter Foundation
- 10:45 **Q & A - Graphical Recording**
By Eloise von Gienanth, ZSI / Miro Welcker, Social Impact
- 10:55 **The CERUSI Lab Caravan approach**
Brief intro into Caravan/Lab process, short presentation of Lab Cases, Learnings & recommendations
By Florian Birk & Miro Welcker, Social Impact
- 11:15 **Q & A - Graphical Recording**
By Eloise von Gienanth, ZSI / Miro Welcker, Social Impact
- 11:25 **Wrap-up & Goodbye**
By Stefanie Konzett-Smoliner, ZSI & Miro Welcker, Social Impact

**LEARN MORE ABOUT RURAL SOCIAL INNOVATION.
JOIN US.**

When? **20. 1. 2022, 10:00 - 11:30 a.m.**

Where? **Online**, please **register [HERE](#)**

After the registration you will receive a confirmation mail with the link and details for the webinar.

In its efforts of reaching out to rural change-makers in Central Europe the CERUSI Partnership set up a series of three webinars (online courses) dedicated to the topic of the "Borders of Rural Social Innovation". If you want to learn more about the project, you can visit our [website](#) and subscribe to our [newsletter](#) or check out the [RSL Academy](#).